



# Unified Fire Quarterly Report

## TOWN OF ALTA

Quarter 2  
Apr. 1, 2022 - Jun. 30, 2022

### Call Volume

TOTAL INCIDENTS

**17**

EMERGENT

**8**

% EMERGENT

**47%**

### Call Type

TOP **FIRE** DISPATCHES

- N/A

TOP **EMS** DISPATCHES

- Trauma **(7)**
- Falls **(1)**
- Unconscious **(1)**
- Chest Pain **(1)**
- Sick Person **(1)**

TOP **OTHER** DISPATCHES

- Combustible/Flammable Spills & Leaks **(2)**
- False Alarm & False Call, Other **(1)**

### Incoming Unit

TOP ENGINE/TRUCK RESPONSES

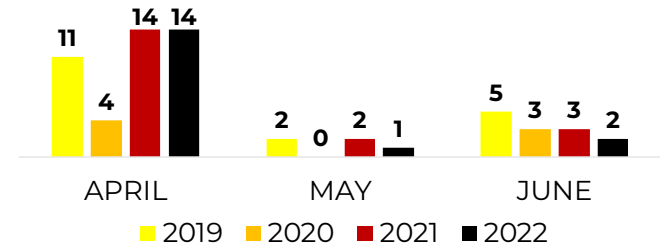
Station	Units	%
113 - Snowbird	16	94.12%
116 - Wasatch	1	5.88%
<b>Total</b>	<b>17</b>	<b>100%</b>

TOP AMBULANCE RESPONSES

Station	Units	%
110 - C. Heights	9	75%
126 - Midvale	2	16.67%
104 - Holladay	1	8.33%
<b>Total</b>	<b>12</b>	<b>100%</b>

\*Most incidents require multiple unit responses

### Four Year Monthly Comparison



### Emergent Total Time

50TH PERCENTILE

**07:42**

90TH PERCENTILE

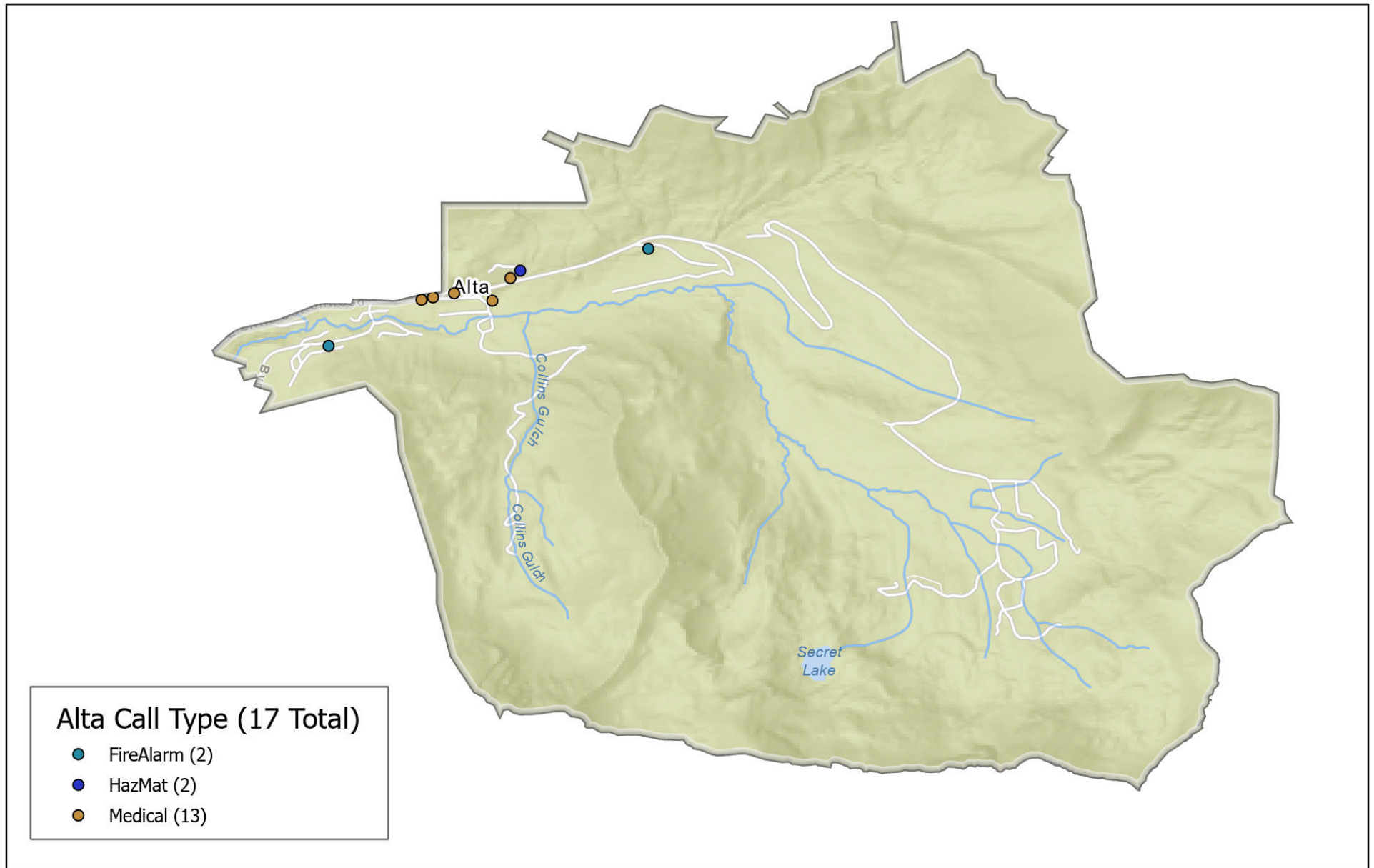
**3:05**

\*Dispatch to Arrival (does not include call processing time)

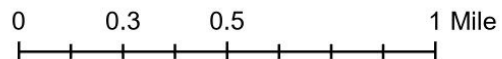
**Town of Alta Liaison**  
Division Chief Jay Torgersen  
(801) 824-3716  
jtorgersen@unifiedfire.org



# UFA CALL TYPE April 1 June 30 2022



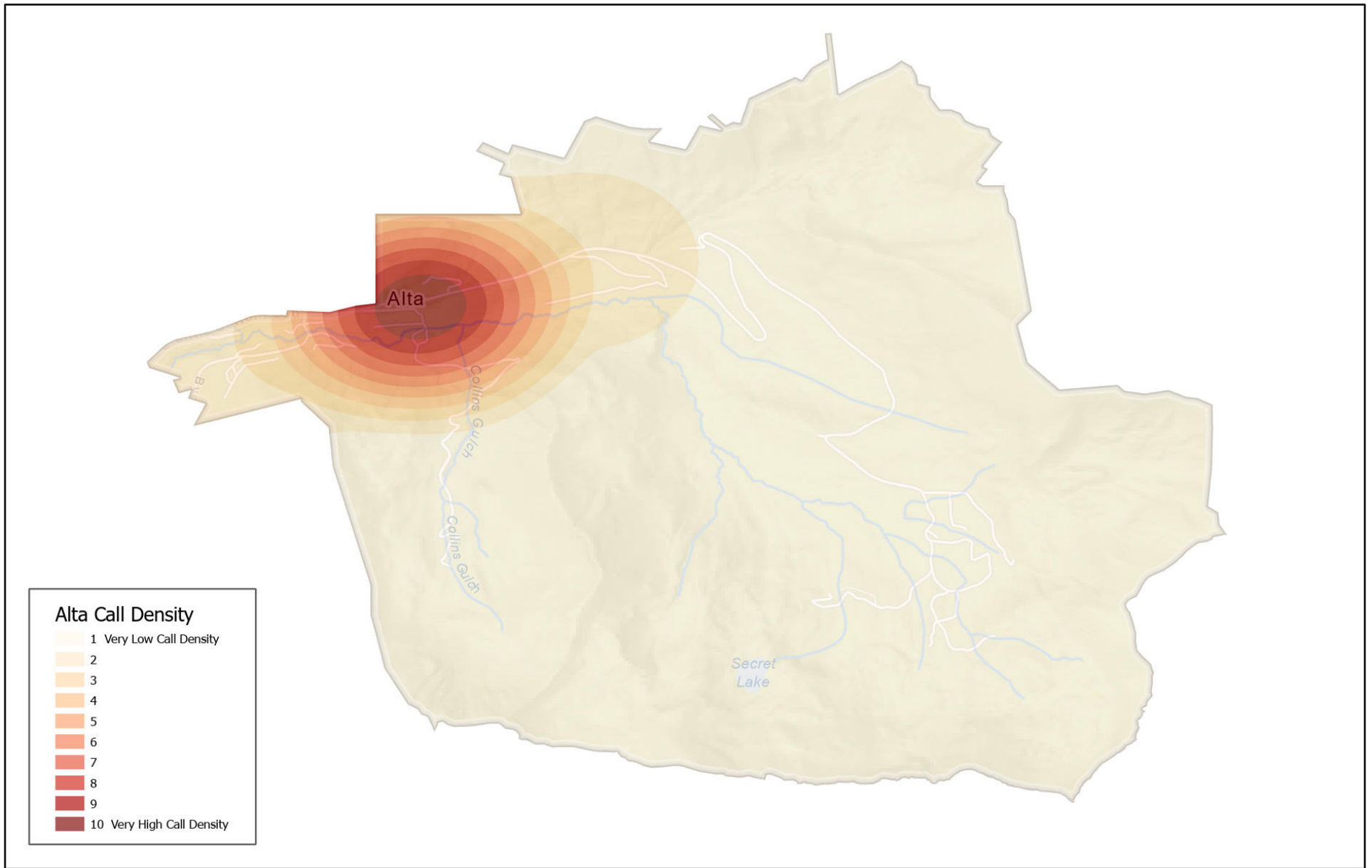
## Alta Town



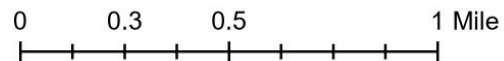
7/5/2022



# UFA CALL DENSITY April 1 to June 30 2022



## Alta Town



7/6/2022

