



Unified Fire Quarterly Report

EMIGRATION TOWNSHIP

Quarter 3
Jul. 1, 2022 - Sep. 30, 2022

Call Volume

TOTAL INCIDENTS

26

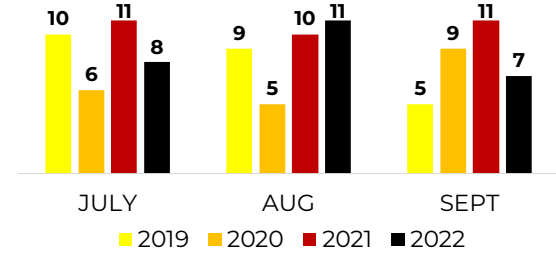
EMERGENT

10

% EMERGENT

38%

Four Year Monthly Comparison



Call Type

FIRE DISPATCHES

- Structure Fire **(2)**

TOP **EMS** DISPATCHES

- Traffic/Transportation Incidents **(2)**
- Falls **(2)**
- Medical Proqa **(2)**
- Unconscious **(2)**
- Responder Request **(1)**

TOP **OTHER** DISPATCHES

- Unintentional System/Detector **(3)**
- False Alarm & False Call, Other **(3)**
- System or detector malfunction **(2)**

Incoming Unit

TOP ENGINE/TRUCK RESPONSES

Station	Units	%
119 - Emigration	26	100%
Total	26	100%

TOP AMBULANCE RESPONSES

Station	Units	%
106 - E. Millcreek	11	91.67%
104 - Holladay	1	8.33%
Total	12	100%

*Most incidents require multiple unit responses

Emergent Total Time

50TH PERCENTILE

05:54

90TH PERCENTILE

40:21

*Dispatch to Arrival (does not include call processing time)

Emigration Township Liaison

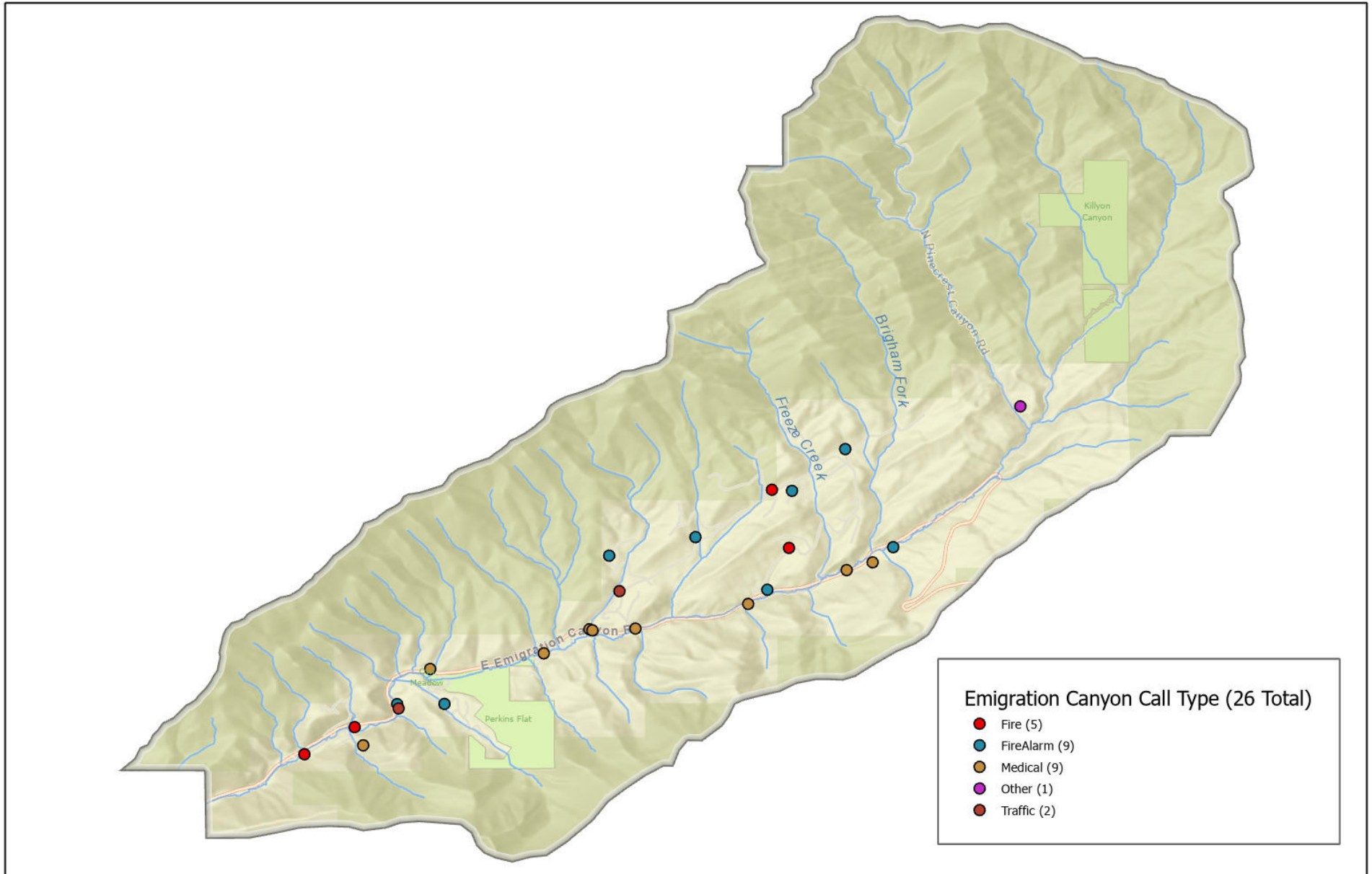
Division Chief Bryan Case

(801) 743-5525

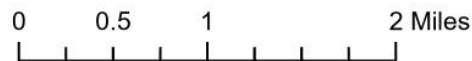
bcase@unifiedfire.org



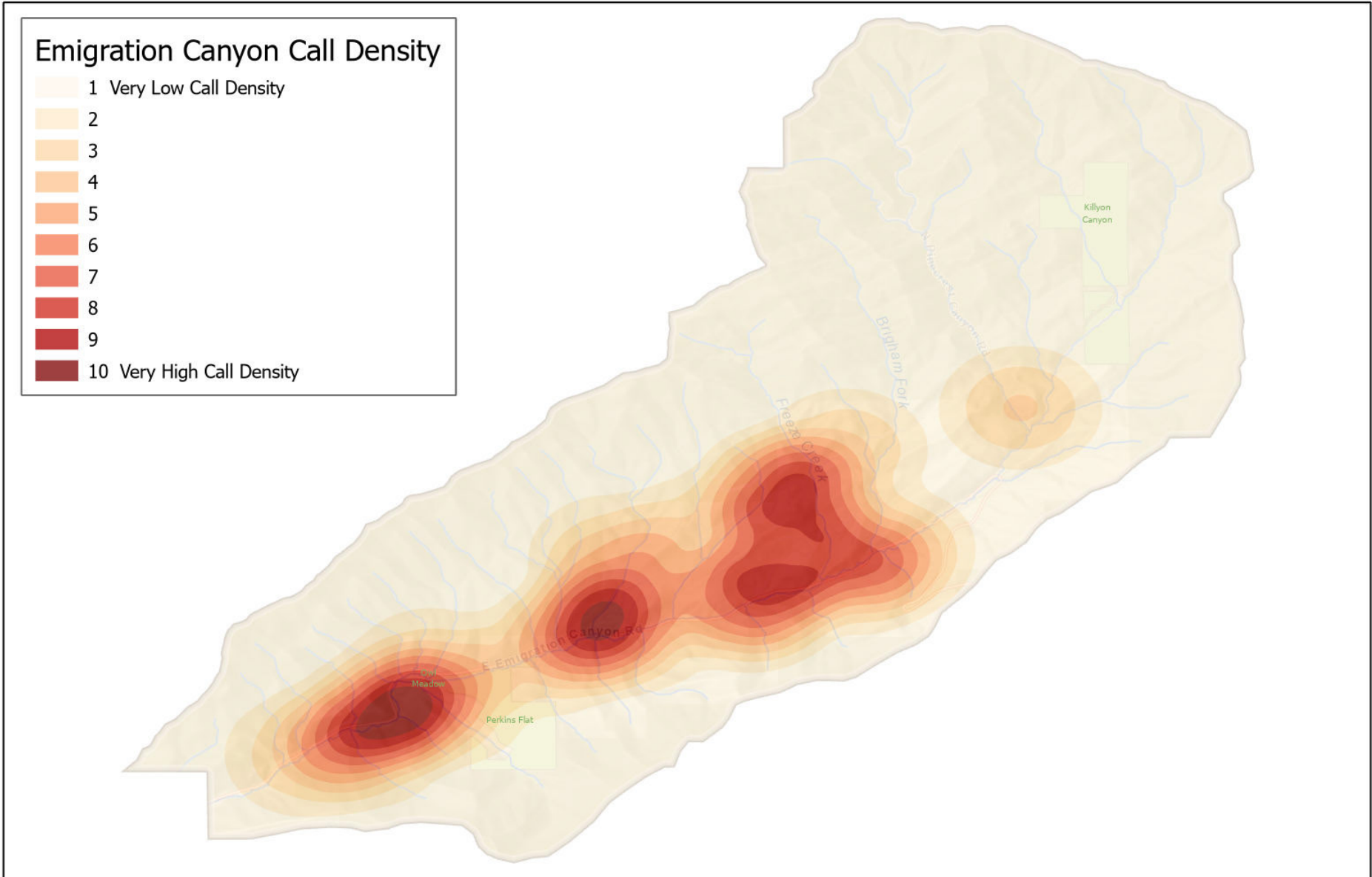
UFA CALL TYPE July 1 to September 30 2022



Emigration Canyon Metro Township



UFA CALL DENSITY July 1 to September 30 2022



Emigration Canyon Metro Township

0 0.5 1 2 Miles

